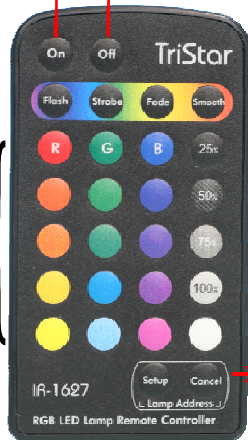


THE TRISTAR[®] SERIES

RGB LED Lamp Remote Controller RM1

For use with SL535F; SL545F & SL580/SL581 lamps

SINGLE ON/OFF buttons



4 Pre-set Colour Changing Modes:

- ① Flash: change colours per 1 second
- ② Strobe: change colours per 5 seconds
- ③ Fade: change 16 colours quickly
- ④ Smooth: change 16 colours slowly

4 Light Intensity Adjustment Keys

16 Pre-set Single Colour Keys
(The last key is for white.)

Setup/Cancel keys for RS485
(For setting the ID address for TRISTAR RGB-SMART LED lamps.)

Using a Line Switch to Change the Colour or Colour-Changing Mode of TriStar[®] RGB Lamps

Setting the Memory Colour and Changing the Mode

Setting the Memory Colour

On	20 sec.	<ol style="list-style-type: none"> 1. Turn the power switch on. 2. Leave the power on for over 20 seconds 3. When the power is turned off for more than 8 seconds, the Mode (colour or colour-changing mode) of the lamp(s) that was on for over 20 seconds will be stored in the Memory. 4. The next time the power switch is turned on, the Mode of the lamp(s) will be the Mode stored in the Memory.
Off		

Changing the Mode

Off	3 sec.	<ol style="list-style-type: none"> 1. Turn the power switch off. 2. Turn the power switch on within 3 seconds. 3. The Mode will be set to Flash (State 2). 4. If the power switch is turned on and off again within 3 seconds, the Mode will be Strobe (State 3). Each time the power switch is turned on and off within 3 seconds, the Mode will change to the next state according to the chart on the right.
On		

Resetting when Lamps are Out of Synchrony

Off	3 sec.	<ol style="list-style-type: none"> 1. Turn the power switch off. 2. Turn the power switch on within 3 seconds. 3. The lamps will be synchronized and the Mode will be set to Flash (State 2). 4. Turning the power switch on and off within 3 seconds will change the mode as described above.
On		

Control Mode	Mode
State 1	Memory
State 2	Flash
State 3	Strobe
State 4	Fade
State 5	Smooth
State 6	○
State 7	R
State 8	G
State 9	B
State 10	●
State 11	●
State 12	●
State 13	●
State 14	●
State 15	●
State 16	●
State 17	●
State 18	●
State 19	●
State 20	●
State 21	●